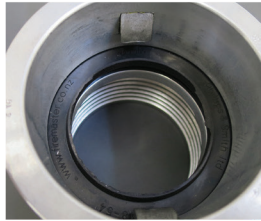


MI



PSL sticker

FI



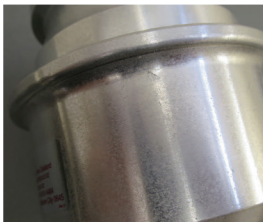
Unique branded pressure washer



Date of manufacture after successful testing



Branded pull knob disc



Machined (not polished all over)



Machined tail - as cast body.
Crosshatch knurl on pull knob.
(Competition has straight knurl)



STDS cert mark.
Unique licence no



Date of manufacture after successful testing



Identification band machined into tail indicates coupling has a square section washer in the internal ferrule, no identification band indicates an O ring in the internal ferrule.



STD cert mark.
Unique licence no



Female coupling after August 2016 will have a small ridge on both lugs of the coupling not visible with pull knobs in place

